

Perfectly situated in the heart of West Chelsea, 515 West 29th Street is an 11-story condominium featuring just 15 half- and full-floor residences designed inside and out by notable architect Soo Chan of SCDA. Located at the bend of the High Line, just one block from the retail and restaurants at Hudson Yards and less than two blocks from lush Hudson River Park, 515 West 29th Street offers sweeping vistas of and proximity to Manhattan's iconic architecture, leisure, and signature greenspaces.

RESIDENCES
3-6N

HALF-FLOOR

2,133 SQ. FT. / 198.2 SQ. M.

2 BEDROOMS* + DEN

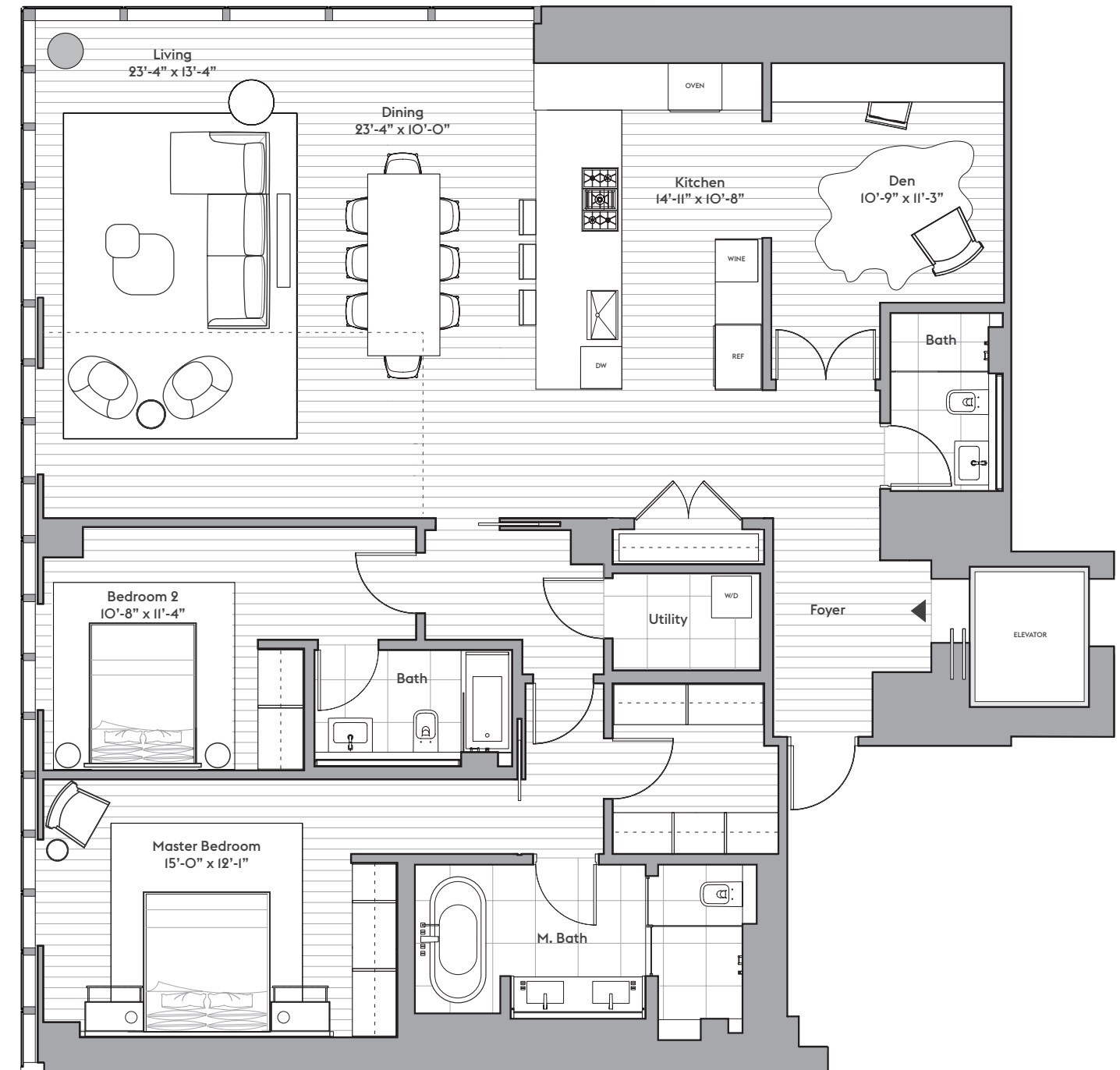
3 BATHROOMS

NORTH AND EAST EXPOSURES

*Can be delivered as 3 Bedrooms
where dotted line indicates

FEATURES

- Private direct keyed elevator access
- Double-paned floor-to-ceiling windows
- 7.5" wide European light oak Grato wood flooring
- 4-pipe fan coil HVAC system with supplemental perimeter heating at select locations for year-round climate control
- Molteni custom millwork closets
- 8'9" solid core wood passage doors with Franz Schneider Brakel hardware
- Belgian Delta LED recessed lighting
- Lutron Homeworks QS System for temperature control, lighting, and window shades
- Integrated motorized Lutron Sivoia solar shades
- Video intercom communication system
- Additional storage included



The artist representations and interior decorations, finishes, appliances and furnishings are provided for illustrative purposes only. Sponsor reserves the right to make substitutions of materials, equipment, fixtures and finishes in accordance with the terms of the Offering Plan. Property Address: 515 West 29th Street New York, New York 10001. Sponsor Name: 515 West 29th Street Owner LLC. Sponsor Address: 270 Lafayette Street, Suite 1410, New York, NY 10012. The complete offering terms are in an offering plan available from sponsor. File No. CD14-0186. Equal Housing Opportunity.

