

# PH

## FULL-FLOOR

2,586 SQ. FT. / 240.2 SQ. M. INTERIOR

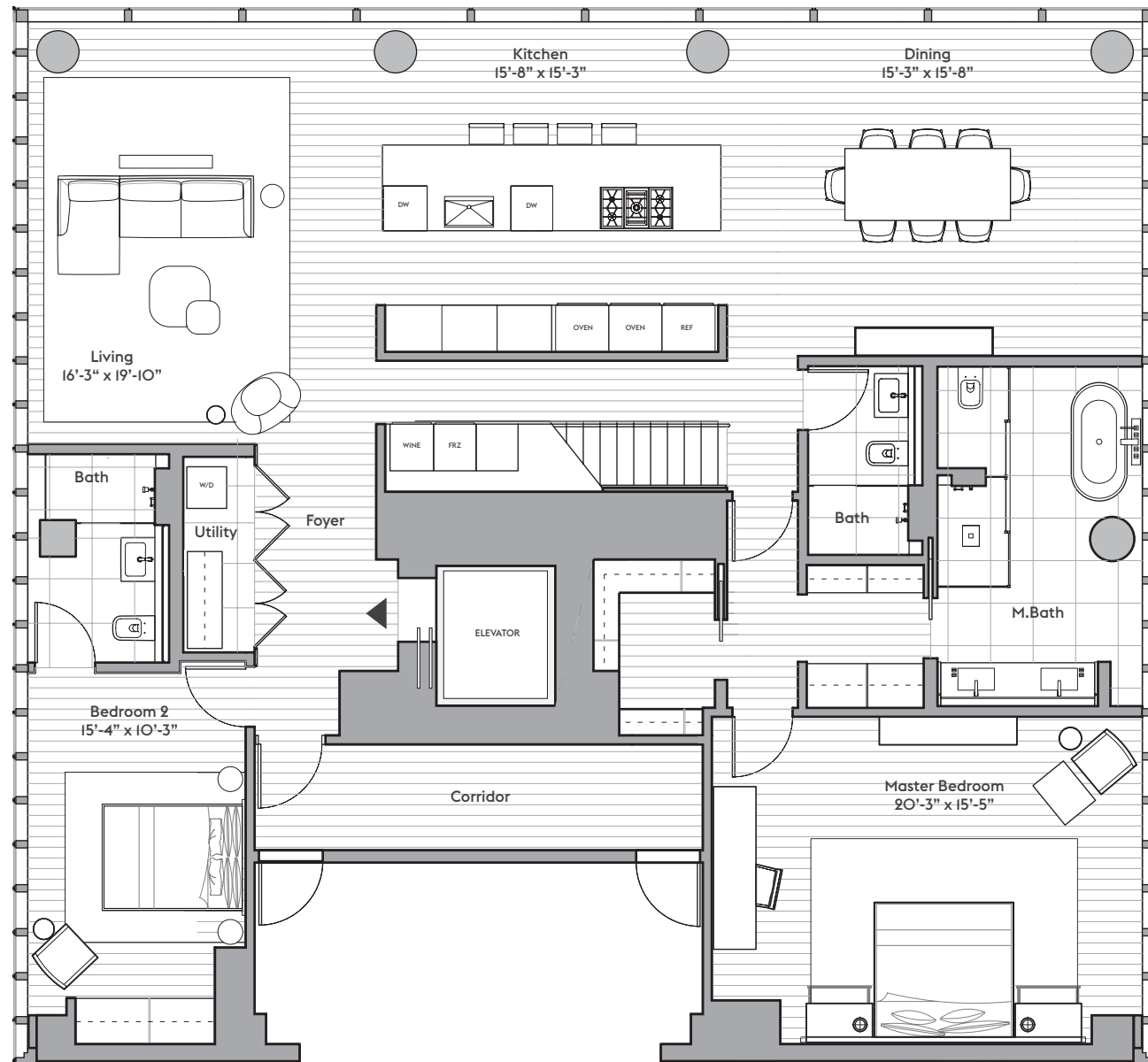
661 SQ. FT. / 61.4 SQ. M. EXTERIOR

2 BEDROOMS | 3 BATHROOMS

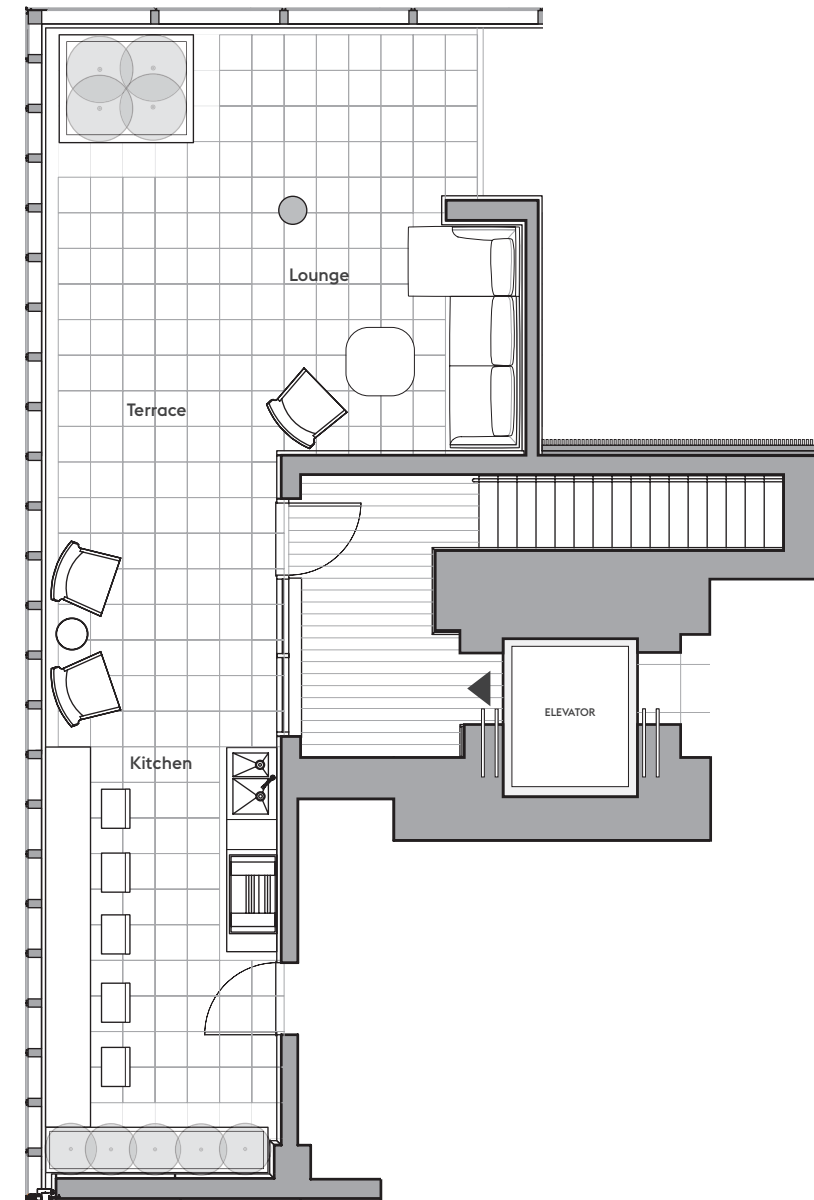
NORTH, SOUTH, AND EAST EXPOSURES

Perfectly situated in the heart of West Chelsea, 515 West 29th Street is an 11-story condominium featuring just 15 half- and full-floor residences designed inside and out by notable architect Soo Chan of SCDA. Located at the bend of the High Line, just one block from the retail and restaurants at Hudson Yards and less than two blocks from lush Hudson River Park, 515 West 29th Street offers sweeping vistas of and proximity to Manhattan's iconic architecture, leisure, and signature greenspaces.

## LOWER LEVEL



## UPPER LEVEL



## FEATURES

- Private direct keyed elevator access
- Private terrace with Danver outdoor grill and integrated irrigation system
- Double-paned floor-to-ceiling windows
- 7.5" wide European light oak Grato wood flooring
- Molteni custom millwork closets
- 8'9" solid core wood passage doors with Franz Schneider Brakel hardware
- Belgian Delta LED recessed lighting
- Lutron Homeworks QS System for temperature control, lighting, and window shades
- Integrated motorized Lutron Sivoia solar shades
- 4-pipe fan coil HVAC system with supplemental perimeter heating at select locations for year-round climate control
- Video intercom communication system
- Additional storage included

