

RESIDENCE

7S

DUPLEX

2,262 SQ. FT. / 210.1 SQ. M. INTERIOR

750 SQ. FT. / 69.7 SQ. M. EXTERIOR

3 BEDROOMS | 3 BATHROOMS

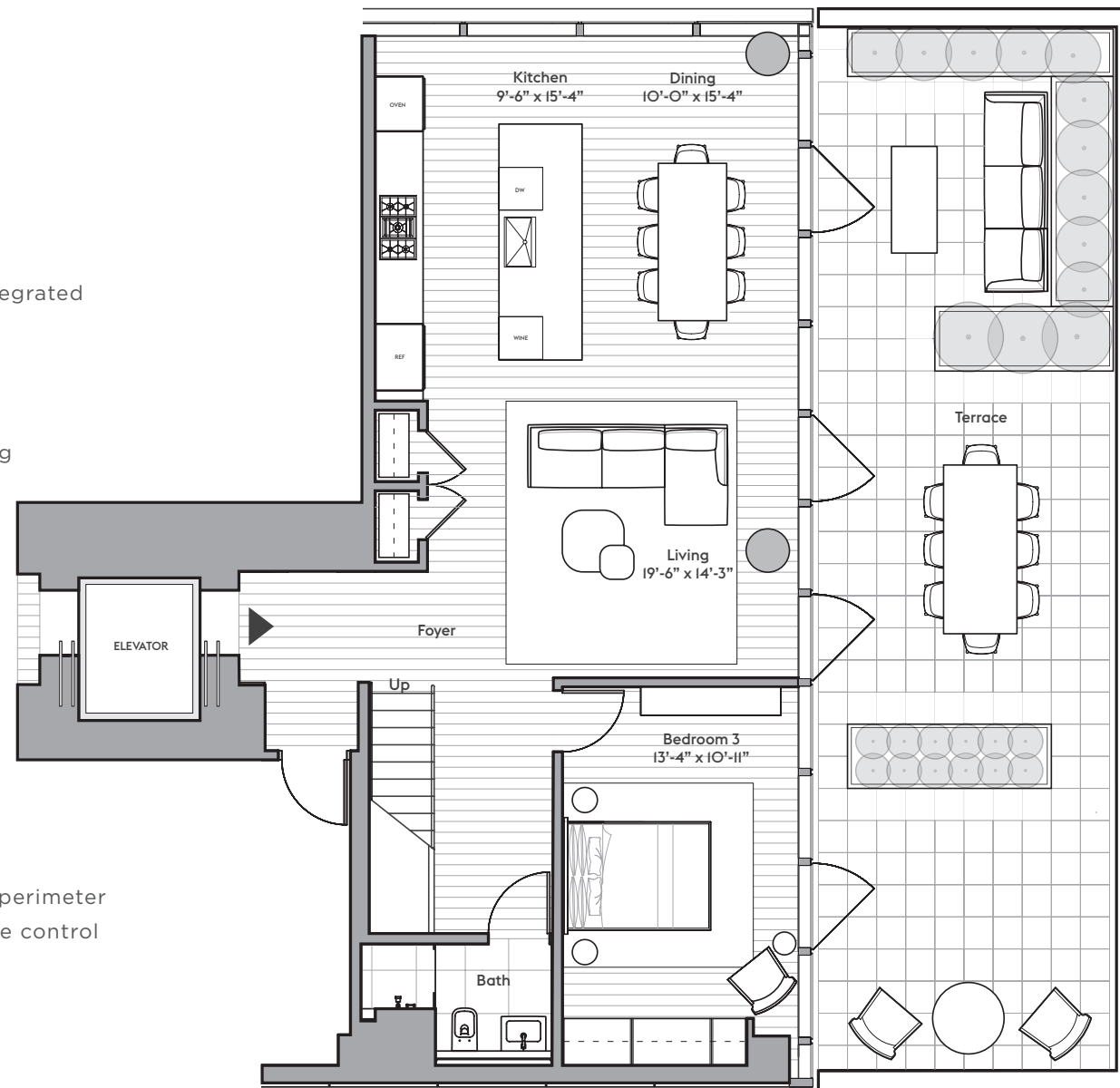
SOUTH AND EAST EXPOSURES

Perfectly situated in the heart of West Chelsea, 515 West 29th Street is an 11-story condominium featuring just 15 half- and full-floor residences designed inside and out by notable architect Soo Chan of SCDA. Located at the bend of the High Line, just one block from the retail and restaurants at Hudson Yards and less than two blocks from lush Hudson River Park, 515 West 29th Street offers sweeping vistas of and proximity to Manhattan's iconic architecture, leisure, and signature greenspaces.

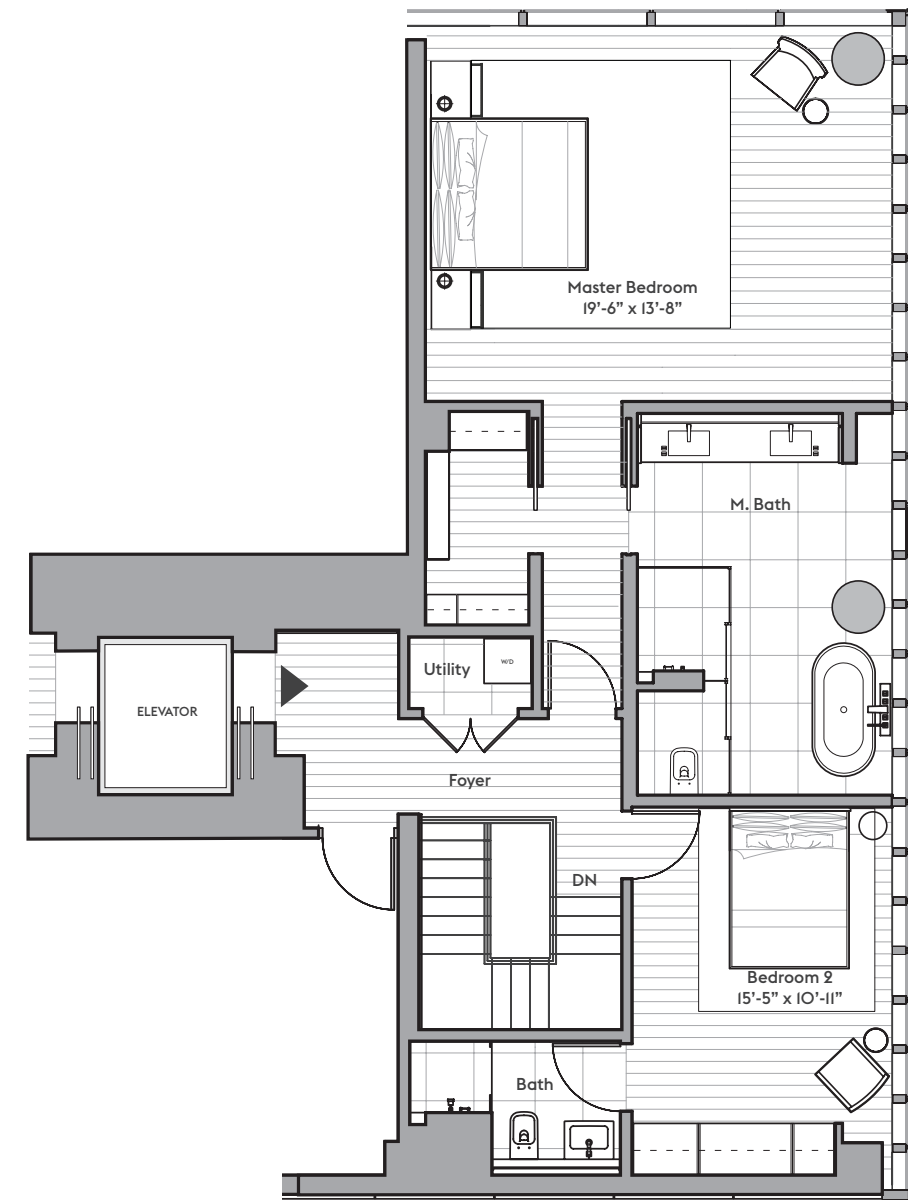
FEATURES

- Private direct keyed elevator access
- Private terrace with Danver outdoor grill and integrated irrigation system
- Double-paned floor-to-ceiling windows
- 7.5" wide European light oak Grato wood flooring
- Molteni custom millwork closets
- 8'9" solid core wood passage doors with Franz Schneider Brakel hardware
- Belgian Delta LED recessed lighting
- Lutron Homeworks QS System for temperature control, lighting, and window shades
- Integrated motorized Lutron Sivoia solar shades
- 4-pipe fan coil HVAC system with supplemental perimeter heating at select locations for year-round climate control
- Video intercom communication system
- Additional storage included

LOWER LEVEL



UPPER LEVEL



The artist representations and interior decorations, finishes, appliances and furnishings are provided for illustrative purposes only. Sponsor reserves the right to make substitutions of materials, equipment, fixtures and finishes in accordance with the terms of the Offering Plan. Property Address: 515 West 29th Street New York, New York 10001. Sponsor Name: 515 West 29th Street Owner LLC. Sponsor Address: 270 Lafayette Street, Suite 1410, New York, NY 10012. The complete offering terms are in an offering plan available from sponsor. File No. CD14-0186. Equal Housing Opportunity.

